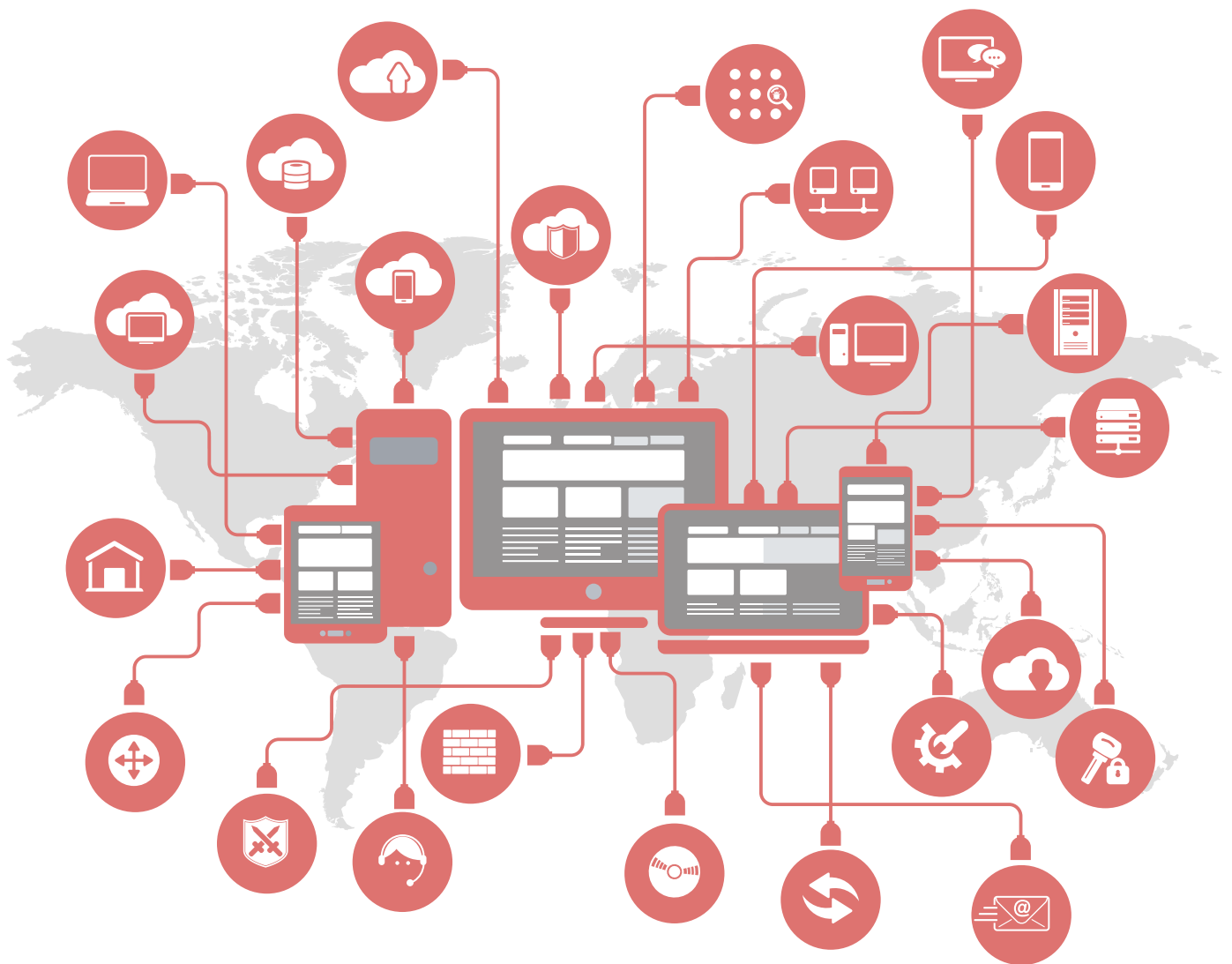


DrayTek

Your reliable networking solutions partner



DATABOOK 2019



Contents

Solutions	3-6
Router	
<hr/>	
Broadband	7-10
xDSL	11-14
LTE	15-17
Fiber	17
<hr/>	
Wireless AP	18-20
Switch	21-25
Network Management	26
IP Telephony	27
Accessories	28
Feature Matrix	29-37

SSL VPN is the solution for a restrictive network environment. The Vigor SSL VPN Solution includes subscription-free client app on a variety of device, a free DrayDDNS hostname for server's access, and built-in server certificate to enhance connection security. It's the integrated SSL VPN solution perfect for small businesses.

The VPN That Works Through Firewalls

SSL VPN uses TLS and SSL protocol, which is widely used by all the browsers for HTTPS connections. Therefore, even if there is a firewall, as long as HTTPS traffic is allowed, SSL VPN will be able to work through.



Built-in Server Certificate Creator

Verifying the server certificate can ensure the identity of the server and protect the VPN clients against man-in-the-middle attacks. Vigor Router can act as the rootCA to generate and sign the server certificate required for a more secure SSL connection.



Free Client APP

We provide the official client APP, SmartVPN, for Windows, macOS, iOS, and Android. They are free to download and no license required.



Flexible Client Authentication Options

You can either use the local user database on the router to authenticate the VPN clients or an external authentication server on the local network. The router is compliant with RADIUS, LDAP, and TACACS+.



Use a Domain Name for the Server

DrayTek dynamic DNS service offers each Vigor Router a hostname on the domain drayddns.com. It's free and only needs to renew once a year. With DrayDDNS, VPN clients are able to access to the router by a fixed hostname of your choice.



Hotspot Web Portal

Communicate with your guests with the captive portal solution included in your Vigor Router. Welcome the visitors, requires authentication, and display information through the custom captive portal page while offering hospitality Wi-Fi.

Various Login Methods

Hotspot Web Portal provides authentication methods including Skip-Login, Click-Through, Facebook Login, Google Login, SMS PIN, and account login with external RADIUS servers.



Presenting Landing Page

Redirect the hotspot guests to the company homepage, online surveys, any custom URLs, or display bulletin message before they can start to browse the Internet.



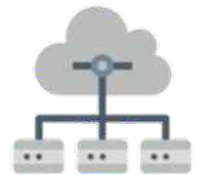
Custom Portal Page

The router provides templates for setting up the portal page quickly, but of course, you may customize every component, including browser title, background, Logo, messages, terms & conditions, and the buttons.



Server Bypassing

Whitelist rules can be set up for specific NAT Rules, traffic destined to particular domains, IP, or ports, and traffic sourced from specific local IP to bypass the captive portal.



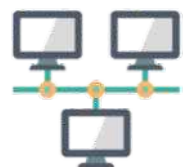
Responsive Design

The portal page adopted responsive web design and will look good on smartphones, tablets, laptops, and desktops.



Per Subnet Hotspot Settings

Each router can have up to 4 profiles with different authentication and landing page settings, and you can apply each of them to only the selected LAN subnets or WLAN SSID.

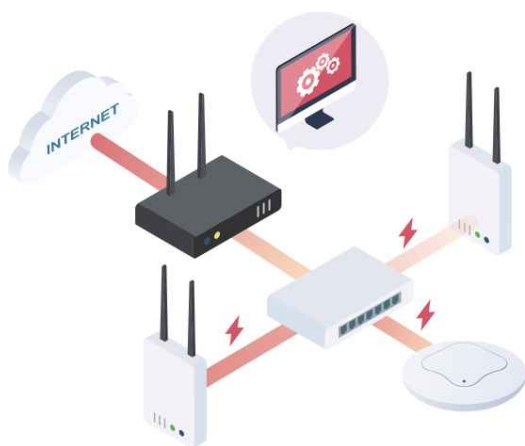


Central AP Management

Use your router as a wireless controller for VigorAPs

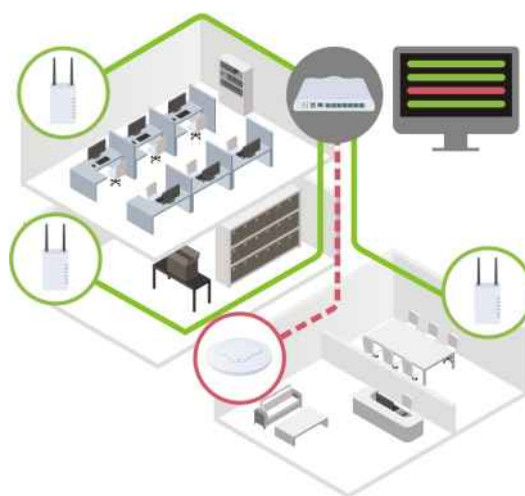
One Management Portal for All

As the Internet gateway, Vigor Router offers a central connection to all the APs on its LAN. From the router, you can check if an AP is online, perform a firmware upgrade, save a configuration backup, or trigger a remote reboot. No need to logging into each device's management page anymore.



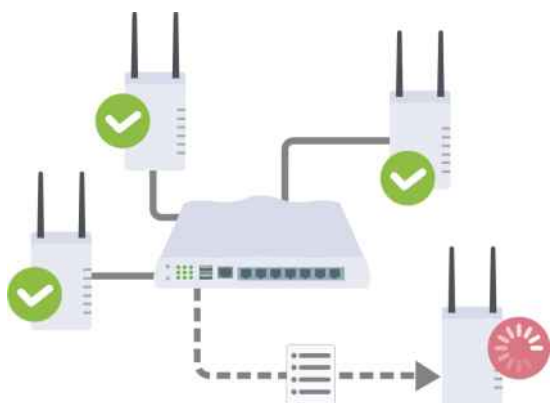
A Centralized View of all the APs

On the status monitoring page, the router presents a list of all the VigorAPs on its LAN, where you can see their IP address, operating channel, SSID of each radio, number of clients, and firmware version all in one page, and the AP offline can be easily spotted.



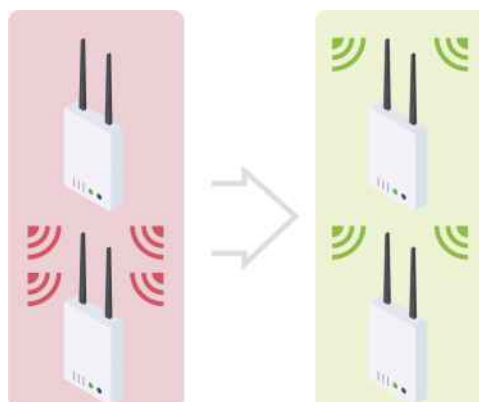
Automatic Provisioning of VigorAPs

You can create a wireless LAN profile on the router in advance, and let the router automatically push it to any VigorAP connecting to the router's LAN. Therefore, you can save the time and technical resource for setting up the access point when you need to add more of them to the network.



Wi-Fi Client Load Balancing

Keeping an AP from being overloaded and assure good Wi-Fi performance by applying a client limit or traffic limit to it. When the number of client or amount of traffic of a single AP reaches the threshold, make it disassociate the idle client, the client of the weakest signal, or stop accepting new clients.

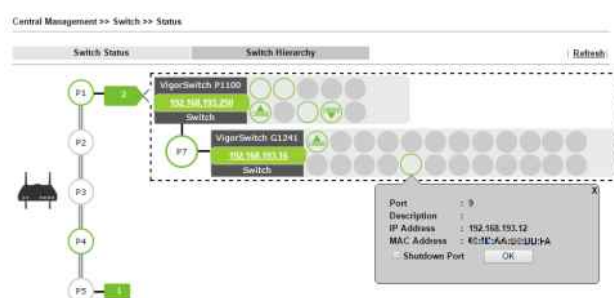


Central Switch Management

Use the router as the management portal of Vigor Switches

Get a Centralized Hierarchy View

On the status monitoring page, the router presents a hierarchy view of the VigorSwitches on its LAN, where you can easily find a network device in the network topology, check their IP address, and find out the physical Ethernet port it is connecting.



Quick VLAN Configuration

The router offers a simple method to plan the VLAN on the switch. It presents the VLANs available according to the VLAN configuration of the router, the port connecting to the router is automatically set to a trunk port, you only need to define PVID when a port is a member of multiple VLANs.

Central Management >> Switch >> Profile

Search Profile / Refresh

Get Settings from External Switch & Save / Factory Default

Name	Status	VID	Interface	Port
VLAN1	UP	1	GE0/0/24	1, 2, 3, 4, 5, 6, 7, 8, 9, 10, 11, 12, 13, 14, 15, 16, 17, 18, 19, 20, 21, 22, 23, 24
VLAN2	UP	2	GE0/0/24	1, 2, 3, 4, 5, 6, 7, 8, 9, 10, 11, 12, 13, 14, 15, 16, 17, 18, 19, 20, 21, 22, 23, 24
VLAN3	UP	3	GE0/0/24	1, 2, 3, 4, 5, 6, 7, 8, 9, 10, 11, 12, 13, 14, 15, 16, 17, 18, 19, 20, 21, 22, 23, 24
VLAN4	UP	4	GE0/0/24	1, 2, 3, 4, 5, 6, 7, 8, 9, 10, 11, 12, 13, 14, 15, 16, 17, 18, 19, 20, 21, 22, 23, 24

Layer 2 Switch VLAN Status

Name	Status	VLAN	Port
VLAN1	UP	1	1, 2, 3, 4, 5, 6, 7, 8, 9, 10, 11, 12, 13, 14, 15, 16, 17, 18, 19, 20, 21, 22, 23, 24
VLAN2	UP	2	1, 2, 3, 4, 5, 6, 7, 8, 9, 10, 11, 12, 13, 14, 15, 16, 17, 18, 19, 20, 21, 22, 23, 24
VLAN3	UP	3	1, 2, 3, 4, 5, 6, 7, 8, 9, 10, 11, 12, 13, 14, 15, 16, 17, 18, 19, 20, 21, 22, 23, 24
VLAN4	UP	4	1, 2, 3, 4, 5, 6, 7, 8, 9, 10, 11, 12, 13, 14, 15, 16, 17, 18, 19, 20, 21, 22, 23, 24

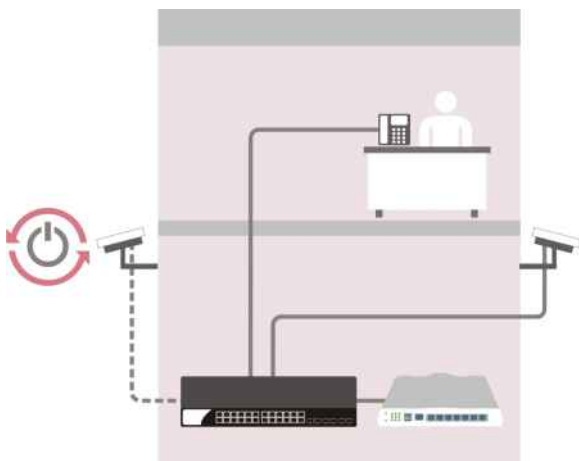
Advanced Switch VLAN

Name	Status	VLAN	Port
VLAN1	UP	1	1, 2, 3, 4, 5, 6, 7, 8, 9, 10, 11, 12, 13, 14, 15, 16, 17, 18, 19, 20, 21, 22, 23, 24
VLAN2	UP	2	1, 2, 3, 4, 5, 6, 7, 8, 9, 10, 11, 12, 13, 14, 15, 16, 17, 18, 19, 20, 21, 22, 23, 24
VLAN3	UP	3	1, 2, 3, 4, 5, 6, 7, 8, 9, 10, 11, 12, 13, 14, 15, 16, 17, 18, 19, 20, 21, 22, 23, 24
VLAN4	UP	4	1, 2, 3, 4, 5, 6, 7, 8, 9, 10, 11, 12, 13, 14, 15, 16, 17, 18, 19, 20, 21, 22, 23, 24

Note: The router configuration will be updated when getting profile settings from external switch.

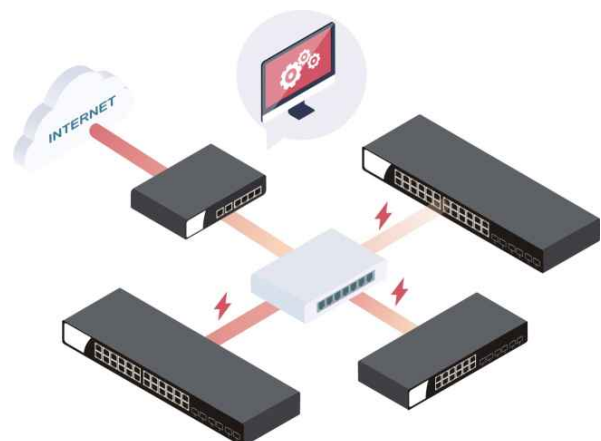
Reboot PoE Devices Remotely

The router's Web UI provides the options to shut down the ports of the switches immediately. For PoE switches, shutting down a port will also cut off the power supply; therefore, it allows you to power off the remote PoE devices, such as the wireless access point or IP cameras, directly from the router's management page. You can also schedule a port shutdown.



Maintaining All the Switches

From the router, Network Administrator can perform configuration backup for all the switches on the network at the same time, no need to log into the management page of each device one-by-one. Configuration restore, remote reboot, and factory reset can also be done from the router.



Vigor2133 Series

Gigabit Broadband Router



- Gigabit Ethernet WAN port
- 2 USB ports for 3G/4G backup or network storage
- 2 Simultaneous VPN Tunnels including maximum 2 SSL VPN Tunnels
- SPI Firewall with content filtering by application, URL keyword, and web category
- Bandwidth Management & Intelligent VoIP QoS to optimize call quality
- Central Management for VigorAP
- Support DrayDDNS

		WLAN	
	VoIP	2.4 GHz	5 GHz
Vigor2133 Vac	●	●	●
Vigor2133 ac		●	●
Vigor2133 n		●	
Vigor2133			

Vigor2915 Series

Dual-WAN Security Router



- Dual-WAN for load-balancing or redundancy
- 1 USB port for 3G/4G WAN, printer, or network storage
- 16 concurrent VPN tunnels including up to 8 SSL VPN
- Bandwidth management & QoS for the best VoIP quality
- SPI Firewall with Content Filtering by Apps, URL keyword, and web category
- IPv6 Support
- Support DrayDDNS

	WLAN	
	2.4 GHz	5 GHz
Vigor2915 ac	●	●
Vigor2915		

Vigor2926 Series

Dual-WAN Security Router



- 2 Gigabit Ethernet WAN Ports
- 2 USB ports for 3G/4G modem or extra storage
- Up to 4 WAN for Load Balancing or Failover
- 802.11ac Wave 2 dual-band wireless for speed up to 1.7 Gbps (ac/Vac model)
- 50 concurrent VPN tunnels including up to 25 SSL VPN
- SPI Firewall with content filtering by application, URL keyword, and web category
- Central Management for VigorAP & VigorSwitch
- Support DrayDDNS

	VoIP	WLAN	
		2.4 GHz	5 GHz
Vigor2926 Vac	•	•	•
Vigor2926 ac		•	•
Vigor2926 n		•	
Vigor2926			

Vigor2952 Series

Dual-WAN Security Firewall



- Dual Gigabit Ethernet WAN
- 2 USB ports for 3G/4G cellular modem, network storage, or USB temperature sensor
- Up to 4 WAN for load-balancing and failover
- 200 simultaneous VPN tunnels including up to 50 SSL VPN
- High Availability (Hardware Redundancy) support
- Central Management for VigorAP & VigorSwitch
- PoE+ capable ports available on Vigor2952P/Pn
- Support DrayDDNS

	PoE	WLAN
Vigor2952 Pn	•	•
Vigor2952 P	•	
Vigor2952 n		•
Vigor2952		

Vigor2960

Dual-WAN Security Firewall



- 2 Gigabit Ethernet Load Balancing WAN ports
- 4 Gigabit Ethernet LAN ports
- 2 USB port for 3G/4G Backup (or Load Balancing), printer, or temperature sensor
- 200 simultaneous VPN tunnels including up to 50 SSL VPN
- Support High Availability (hardware redundancy)
- Support PPPoE server with quota policy and MAC address filter
- Flexible Firewall, Content Filtering, and Bandwidth Management policies
- Central Management for VigorAP & VigorSwitch
- Support DrayDDNS

Vigor300B/3220 Series

Multi-WAN Security Router



- 4 Gigabit WAN Port for load balancing or failover
- 2 USB for 3G/4G USB mode, printer, network storage or temperature sensor
- 200 simultaneous VPN tunnels including up to 50 SSL VPN (Vigor3220 series)
- SPI Firewall with content filtering by application, URL keyword, and web category
- Bandwidth Management & QoS for the best VoIP quality
- Central Management for VigorAP and VigorSwitch
- Support DrayDDNS

	WLAN
Vigor3220 n	●
Vigor3220	
Vigor300B	

Vigor3900

Multi-WAN Security Appliance

- 4 Gigabit Ethernet WAN ports + 1 SFP Fiber WAN
- 2 Gigabit Ethernet LAN ports + 1 SFP Fiber LAN
- 2 USB port for 3G/4G Backup (or Load Balancing), printer, or temperature sensor
- 500 simultaneous VPN tunnels including up to 100 SSL VPN
- Outbound & Inbound Load Balancing
- Support High Availability (hardware redundancy)
- Support PPPoE server with quota policy and MAC address filter
- Flexible Firewall, Content Filtering, and Bandwidth Management policies
- Central Management for VigorAP & VigorSwitch
- Support DrayDDNS



Vigor3910 Series

Multi-WAN Security Router

- Support G.Fast (Vigor3910dsl)
- 8 LAN/WAN configurable ports (2 10G SFP+ & 2 2.5GbE & 4 GbE)
- 4 Gigabit Ethernet LAN ports
- 500 simultaneous VPN tunnels including up to 200 SSL VPN
- 2 USB 3.0 port for network storage and printer
- High Availability (Hardware Redundancy) support
- SPI Firewall with Content Filtering
- Central Management for VigorAP & VigorSwitch
- IPv6 Support on WAN & LAN
- Support DrayDDNS
- Managed by VigorACS 2



	35b	G.Fast
Vigor3910dsl	●	●
Vigor3910		

Vigor130

VDSL2/ADSL2/2+ Modem



- A router with VDSL2/ADSL2+ modem built-in
- Multi-PVC for triple-play applications
- Support VDSL2 Vectoring
- Integrated Firewall with URL keyword and web feature filtering

VigorNIC 132 Series

VDSL2/ADSL2+ PCI-E Card



- VDSL2/ADSL2+ modem/router on PCI-E card
- Equip with Ethernet/Fiber WAN 2 for failover
- Up to 5 PVC for triple-play applications
- Can be act as a bridge or a fully functioning router
- Built-in Stateful Firewall with URL Keyword Filtering
- Supports Windows 7/8/8.1/10 & Linux

	DSL	Fiber	Copper
VigorNIC 132F	•	•	
VigorNIC 132	•		•

Vigor160 Series

35b/G.Fast Modem



- Support G.Fast (Vigor166)
- Support VDSL2 35b Super Vectoring/ADSL2+
- Multi-PVC for triple-play applications

	35b	G.Fast
Vigor165	•	
Vigor166	•	•

Vigor2762 Series

ADSL2/2+ & VDSL2 Router



- VDSL2/ADSL2+ Modem/Router
- 4 Gigabit Ethernet LAN Port, LAN port 4 can be configured as WAN
- 2 USB ports for 3G/4G modem or extra storage
- 2 Simultaneous VPN Tunnels including Maximum 2 SSL VPN Tunnels
- SPI Firewall with Content Filtering
- Bandwidth Management & Intelligent VoIP QoS to optimize call quality
- Support DrayDDNS

	VoIP	WLAN	
		2.4 GHz	5 GHz
Vigor2762 Vac	•	•	•
Vigor2762 ac		•	•
Vigor2762 n		•	
Vigor2762			

Vigor2765/2766 Series

35b/G.Fast Security Router



- Support G.Fast (Vigor2766 series)
- Support VDSL2 35b Super Vectoring/ADSL2+
- Robust Firewall & Security for Internet activities
- 2 VPN connections for remote access and LAN-to-LAN
- Bandwidth Management with intelligent VoIP QoS
- Support DrayDDNS

		WLAN	
		2.4 GHz	5 GHz
Vigor2766 ac	•	•	•
Vigor2766	•	•	
Vigor2765 ac	•	•	•
Vigor2765	•		

Vigor2862 Series

VDSL2 Security Firewall



- VDSL2/ADSL2+ Router
- Up to 4 WAN for Load Balancing or Failover
- 802.11ac Wave 2 dual-band wireless for speed up to 1.7 Gbps (ac model)
- 32 Simultaneous VPN Tunnels
- SPI Firewall with Content Filtering
- Central Management for VigorAP & VigorSwitch
- Support DrayDDNS

	VDSL Bonding	WLAN		VoIP
		2.4GHz	5GHz	
Vigor2862 Vac		•	•	•
Vigor2862 ac		•	•	
Vigor2862 n		•		
Vigor2862 Bn	•	•		
Vigor2862 B	•			
Vigor2862				

Vigor2865/2866 Series

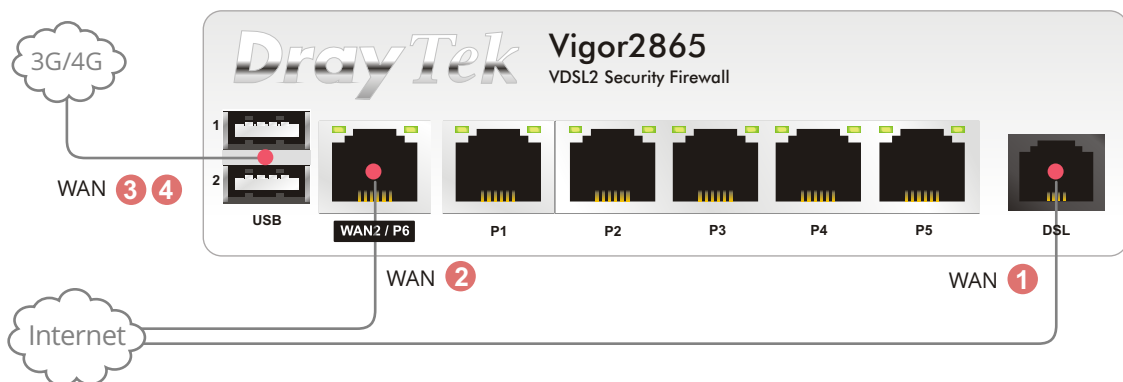
35b/G.Fast Firewall Security Router



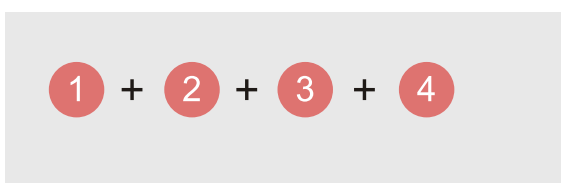
- Support G.Fast (Vigor2866 series)
- Support VDSL2 35b Super Vectoring/ADSL2+
- Dual-band 4x4 MU-MIMO 802.11ac Wave 2 for speed up to 1733Mbps + 800Mbps (ac model)
- 2 USB ports for 3G/4G modem or extra storage
- 32 Simultaneous VPN Tunnels
- SPI Firewall with Content Filtering
- Central Management for VigorAP & VigorSwitch
- Support DrayDDNS

		WLAN			
		35b	G.Fast	2.4 GHz	5 GHz
Vigor2866 ac		•	•	•	•
Vigor2866		•	•		
Vigor2865 ac		•		•	•
Vigor2865		•			

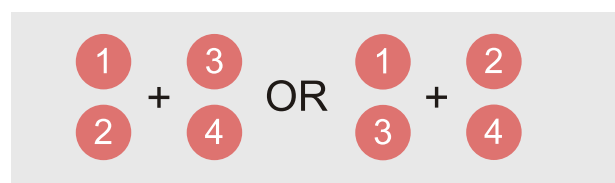
Seamless Connectivity



Load Balance Usage



Load Balance with Backup Usage



VigorLTE 200 Series

LTE Router



- Dual SIM for 3G/4G/LTE Cellular Connectivity with speed up to 150 Mbps
- Robust Firewall & Security for Internet activities
- 2 VPN connections for remote access and LAN-to-LAN
- Bandwidth Management with intelligent VoIP QoS
- Support DrayDDNS

	WLAN
VigorLTE 200n	●
VigorLTE 200	

Vigor2620 LTE Series

LTE Router



- Dual SIM for 3G/4G/LTE Cellular Connectivity with speed up to 150 Mbps
- VDSL2/ADSL2+ Modem Router
- Robust Firewall & Security for Internet activities
- 2 VPN connections for remote access and LAN-to-LAN
- Bandwidth Management with intelligent VoIP QoS
- Support DrayDDNS

	DSL	WLAN
Vigor2620Ln	●	●
Vigor2620L	●	

Vigor2862 LTE Series

LTE Router



- SIM-base, 3G/4G LTE Router, CAT 4 up to 150Mbps connection speed
- VDSL2/ADSL2+ support
- 802.11ac Wave 2 dual-band wireless for speed up to 1.7Gbps (Lac model)
- 1 Ethernet WAN for Load Balancing or Failover
- 1 USB port for 3G/4G modem or extra storage
- 32 Simultaneous VPN Tunnels
- SPI Firewall with Content Filtering
- Central Management for VigorAP & VigorSwitch
- Support DrayDDNS

	WLAN	
	2.4GHz	5GHz
Vigor2862Lac	●	●
Vigor2862Ln	●	
Vigor2862L		

Vigor2865/2866 LTE Series

LTE Router



- SIM-base, 3G/4G LTE Router, CAT 6 up to 300Mbps connection speed
- Support G.Fast (Vigor2866 LTE series)
- Support VDSL2 35b Super Vectoring/ADSL2+
- Dual-band 4x4 MU-MIMO 802.11ac Wave 2 for speed up to 1733Mbps + 800Mbps (ac model)
- 1 USB port for 3G/4G modem or extra storage
- 32 Simultaneous VPN Tunnels
- SPI Firewall with Content Filtering
- Central Management for VigorAP & VigorSwitch
- Support DrayDDNS

	35b	G.Fast	WLAN	
			2.4 GHz	5 GHz
Vigor2866Lac	●	●	●	●
Vigor2866L	●	●		
Vigor2865Lac	●		●	●
Vigor2865L	●			

Vigor2926 LTE Series

LTE Router



- SIM-base, 3G/4G LTE Router, CAT 4 up to 150Mbps connection speed
- 2 Ethernet WAN for Load Balancing or Failover
- Built-in 802.11ac Wave 2 dual-band Wi-Fi, delivers speed up to 1.7Gbps (Lac model)
- 1 USB port for 3G/4G modem or extra storage
- 50 Simultaneous VPN Tunnels
- SPI Firewall with Content Filtering by URL Keyword, Category, and Apps
- Central Management for VigorAP & VigorSwitch
- Support DrayDDNS

	WLAN	
	2.4GHz	5GHz
Vigor2926Lac	●	●
Vigor2926Ln	●	
Vigor2926L		

Vigor2133FVac

Fiber



- Fiber Slot WAN port
- Fully supports VLAN for Triple-Play applications
- Built-in VoIP function with 2 RJ-11 FXS ports
- 2 concurrent VPN tunnels for remote access or LAN-to-LAN connections
- SPI Firewall with content filtering by application, URL keyword, and web category
- Bandwidth Management & Intelligent VoIP QoS to optimize call quality
- Support DrayDDNS

The Vigor Fiber Router Series is only for project and please check with the local authorized resellers for availability.

VigorAP 710

802.11n Access Point



- 802.11n compliant with 2x2 MIMO
- Delivers data rate of up to 300 Mbps
- 1 x 10/100 Base-T LAN port
- Up to 4 SSIDs with unique Subnet, VLAN, Access Control, Bandwidth Limit settings
- Built-in RADIUS server for 802.1x authentication
- AirTime Fairness support
- Improve roaming experience by Fast Roaming & AP-assisted Roaming
- Provide multiple operating modes - AP, Bridge, WDS, and Universal Repeater
- Support both stand-alone and controller-based setup

VigorAP 810

802.11n Access Point



- 802.11n compliant with 2x2 MIMO
- Delivers data rate of up to 300 Mbps
- 5-port Fast Ethernet Switch including 1 PoE-capable port
- 1 USB 2.0 for printer or USB thermometer
- 2 LAN Subnet, up to 4 SSIDs with unique Subnet, VLAN, Access Control, Bandwidth Limit settings
- Built-in RADIUS server for 802.1x authentication
- AirTime Fairness support
- Improve roaming experience by Fast Roaming & AP-assisted Roaming
- Provide multiple operating modes - AP, Bridge, WDS, and Universal Repeater
- Support both stand-alone and controller-based setup

VigorAP 802

11ac Dual-Band Wireless Mesh Plug AP



- Concurrent dual band
- Support 2x2 11ac
- Data rate up to 867Mbps in 5GHz and up to 300Mbps in 2.4GHz
- 1 GbE port
- Plug-n-Play Meshing (Mesh node)
- Airtime Fairness
- Band Steering
- AP-Assisted Roaming
- RADIUS client for 802.1x authentication
- Compliant with Central AP Management of Vigor Router and VigorACS

VigorAP 903

11ac Dual-Band Wireless Mesh AP



- Concurrent dual band
- Support 2x2 11ac WAVE2
- Data rate up to 867Mbps in 5GHz and up to 400Mbps in 2.4GHz
- 5 GbE port (including 1 PoE) + 1 USB Port
- Plug-n-Play Meshing
- Airtime Fairness
- Band Steering
- AP-Assisted Roaming
- Built-in RADIUS server for 802.1x authentication
- Compliant with Central AP Management of Vigor Router and VigorACS

VigorAP 910C

802.11ac Ceiling-mount Access Point



- Concurrent Dual-band 802.11ac with 2x2 MIMO
- Delivers data rate of up to 867 Mbps in the 5GHz band and 300 Mbps in the 2.4GHz band
- 1 x PoE-capable Gigabit Ethernet port
- Features AirTime Fairness and Band Steering for better Wi-Fi user experience
- Built-in RADIUS server for 802.1x authentication
- Improve roaming experience by Fast Roaming & AP-assisted Roaming

VigorAP 1000C

Tri-band 11ac Gigabit AP



- Concurrent tri-band
- Support dual 2x2 11ac WAVE2
- Data rate up to 867Mbps in 5GHz and up to 400Mbps in 2.4GHz
- 2 GbE port (including 1 PoE)
- Airtime Fairness
- Band Steering
- AP-Assisted Roaming
- Built-in RADIUS server for 802.1x authentication
- Compliant with Central AP Management of Vigor Router and VigorACS

VigorAP 920R Series

Ruggedized Outdoor AP



- IP 67-rated enclosure for outdoor usage, water-proof and dust-resistance
- 2.4/5GHz Dual band WiFi with 2x2 MIMO
- Secure VLAN/SSID grouping, up to 128 WLAN clients manageable per Radio
- IEEE 802.3az/Energy Efficient Ethernet PoE port
- Compatible with AP Management for centralized management
- High RF power for long-distance and expansive coverage
- Built-in 5GHz Directional Antenna selectable (920RPD)

	PoE Out	Directional Antenna
VigorAP 920RPD	●	●
VigorAP 920R		

VigorSwitch G1080

Smart Lite Gigabit Switch

- Simple and Easy to use network switch
- 8 Gigabit capable ports
- Support HTTP Web Management
- QoS for application traffic prioritization
- Support 8 VLANs & 1 Trunking Group
- Power saving by 802.3az Energy Efficient Ethernet
- Support Loop Detection & Prevention



VigorSwitch P1092

PoE Smart Lite Gigabit Switch

- 8 Gigabit PoE+ capable ports
- 2 Gigabit SFP ports
- 110-watt PoE power budget
- QoS with 4 priority queues and rate limiting
- Support 10 VLANs & 2 Trunking Groups
- Support Loop Detection & Prevention



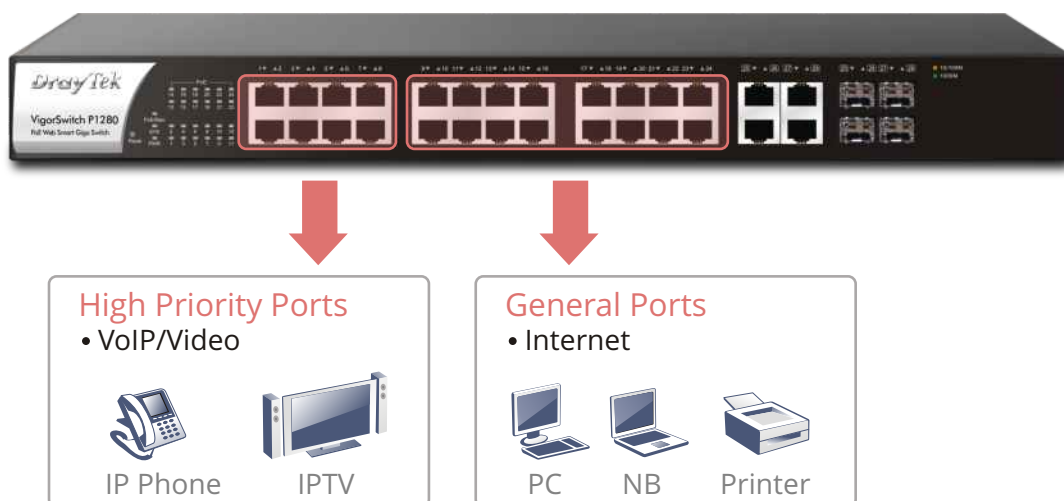
VigorSwitch G1280/P1280

Web Smart Gigabit Switch

- 24 Gigabit capable ports & 4 combo Gigabit SFP/RJ-45 ports
- 24 Gigabit PoE+ capable ports with PoE power budget up to 340 watts (P1280)
- Auto Voice VLAN for easy VoIP deployment and best call quality
- QoS with 8 priority queues and rate limiting
- Dual-stack IPv4/IPv6 support
- Compliant with Switch Management of Vigor Router



QoS ensures important traffic has high priority



VigorSwitch P2121

PoE L2 Managed Gigabit Switch

- 8 Gigabit PoE+ capable ports with PoE power budget up to 140 watts
- 4 Gigabit SFP/RJ-45 combo ports for uplink
- VLAN configuration based on 802.1q tag, MAC address, and protocol
- Auto Voice VLAN and Auto Surveillance VLAN to optimize call and video quality
- Secure Local Network by 802.1x Port Security, ACL, IP Source Guard and DHCP Snooping
- Support IPv6 with MLD Snooping, IPv6 ACL, and IPv6 DNS Resolver
- Authentication by local database, multiple RADIUS, and TACACS+ servers
- IEEE 802.3az (Energy-Efficient Ethernet) Compliant
- Support SNMP v1/v2c/v3, RMON, and Syslog for network monitoring
- Compliant with Switch Management of Vigor Router



VigorSwitch G2280/P2280

L2 Managed Gigabit Switch

- 24 Gigabit Ethernet ports + 4 Gigabit SFP/RJ-45 combo ports
- 24 Gigabit PoE+ capable ports with PoE power budget up to 385 watts (P2280)
- VLAN configuration based on 802.1q tag, MAC address, and protocol
- Auto Voice VLAN and Auto Surveillance VLAN to optimize call and video quality
- Secure Local Network by 802.1x Port Security, ACL, IP Source Guard and DHCP Snooping
- Support IPv6 with MLD Snooping, IPv6 ACL, and IPv6 DNS Resolver
- Authentication by local database, multiple RADIUS, and TACACS+ servers
- IEEE 802.3az (Energy-Efficient Ethernet) Compliant
- Support SNMP v1/v2c/v3, RMON, and Syslog for network monitoring
- Compliant with Switch Management of Vigor Router



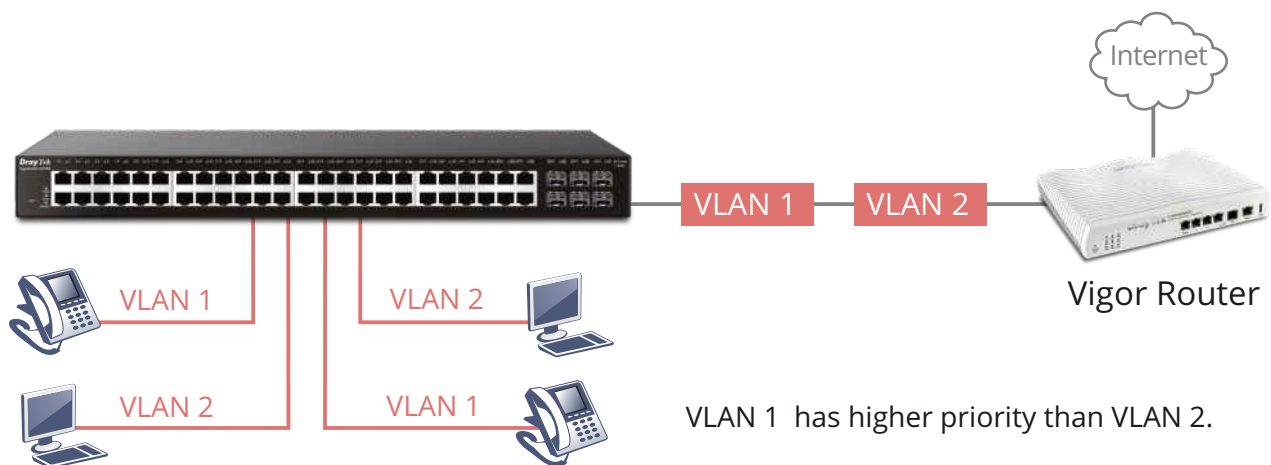
VigorSwitch G2500/P2500

L2 Managed Gigabit Switch

- 44 Gigabit capable ports, 4 combo Gigabit SFP/RJ-45 ports & 2 SFP Ports
- 44 Gigabit PoE+ capable ports with PoE power budget up to 405 watts (P2500)
- VLAN configuration based on 802.1q tag, MAC address, and protocol
- Auto Voice VLAN and Auto Surveillance VLAN to optimize call and video quality
- Secure Local Network by 802.1x Port Security, ACL, IP Source Guard and DHCP Snooping
- Support IPv6 with MLD Snooping, IPv6 ACL, and IPv6 DNS Resolver
- Authentication by local database, multiple RADIUS, and TACACS+ servers
- IEEE 802.3az (Energy-Efficient Ethernet) Compliant
- Support SNMP v1/v2c/v3, RMON, and Syslog for network monitoring
- Compliant with Switch Management of Vigor Router



Improving Performance by QoS



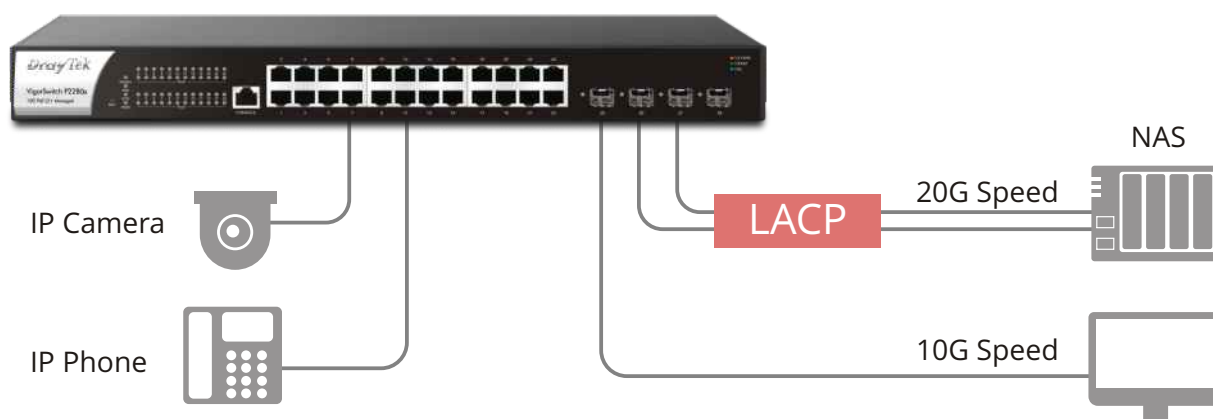
VigorSwitch G2280x/P2280x

L2+ Managed Switch

- 24 Gigabit capable ports & 4 10G SFP+ ports
- 24 Gigabit PoE+ capable ports with PoE power budget up to 400 watts (P2280x)
- VLAN configuration based on 802.1q tag, MAC address, and protocol
- Auto Voice VLAN and Auto Surveillance VLAN to optimize call and video quality
- Secure Local Network by 802.1x Port Security, ACL, IP Source Guard and DHCP Snooping
- Support IPv6 with MLD Snooping, IPv6 ACL, and IPv6 DNS Resolver
- Authentication by local database, multiple RADIUS, and TACACS+ servers
- IEEE 802.3az (Energy-Efficient Ethernet) Compliant
- Support SNMP v1/v2c/v3, RMON, and Syslog for network monitoring
- Compliant with Switch Management of Vigor Router



Link Aggregation

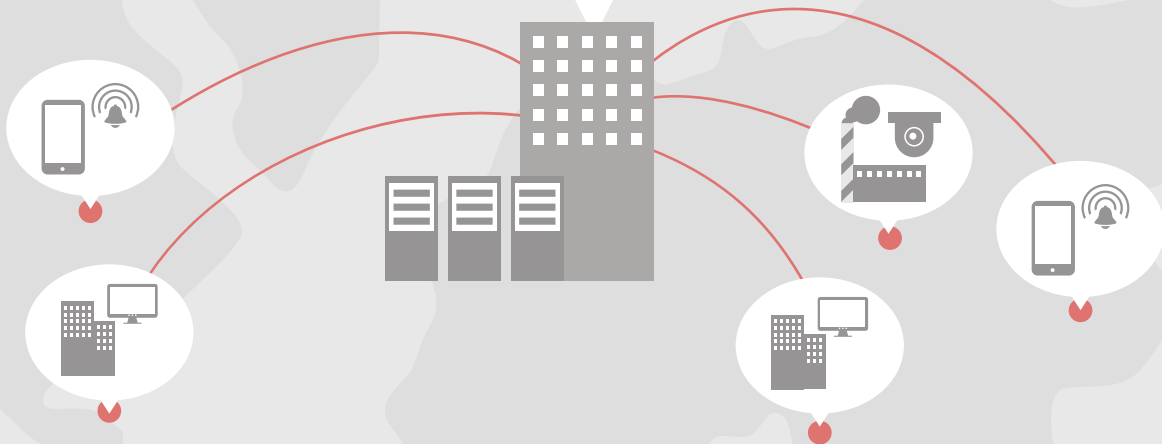
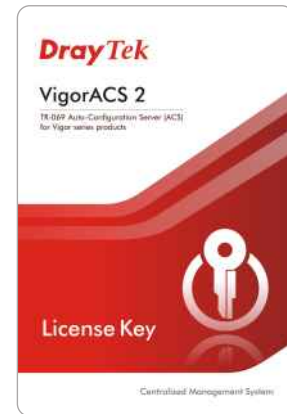


Multi-site Secure Communication

VigorACS 2

Centralized Management System

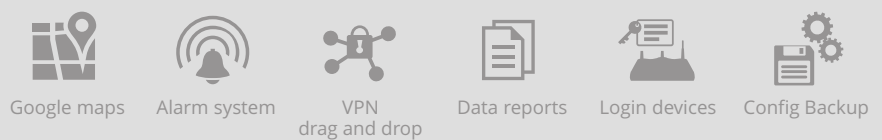
- Supports TR-069 standard to manage Vigor routers and APs
- CPE Provisioning
- Real-time Status Monitoring
- Advanced Firmware Management
- VPN Wizard for easy configuration of VPN tunnels
- AP & Wireless Management
- Log Recording and Report
- Designed with RWD to fit various size of screens



Cross-browser Support



Feature

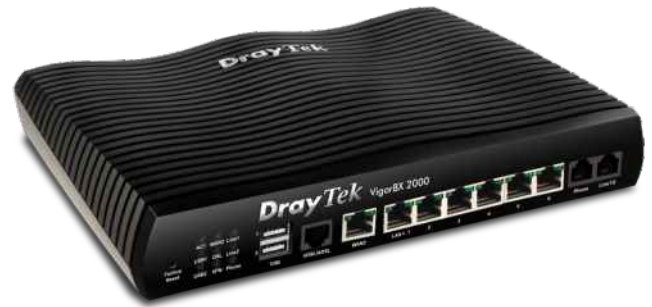


Rich Solution

VigorBX 2000

IPPBX Firewall Router

- Integrated multimode ADSL2+/VDSL2 modem
- Gigabit Ethernet WAN for load-balancing/fail-over connectivity
- 6 x Gigabit Ethernet LAN for network virtualization
- Dual USB 2.0 for 4G LTE Dongles and file sharing
- 32 VPN Tunnels (including 16 SSL VPN tunnels)



Accessories

WCF License

Real-Time Dynamic Web Content Classification Service

- Zero-Hour Security for identifying outbreaks on their way to users, instead of reacting to their pain.
- Innovative Data Cloud Technology for overcoming local storage limitations and satisfying customers' specific needs.



DAC-CX10

10G SFP+ Cable

- Support for multi-gigabit data rates up to 10Gb/s
- Data rates backward compatible to 1Gb/s
- Hot Pluggable SFP+



DrayTek Rack-mount Plate

The metal rack-mount plate is designed for sustaining the device of Vigor2862/Vigor2926 series inside the 19-inch cabinet.



USB Thermometer

Temperature Sensor for DrayTek routers

- Direct router/AP connection
- Outer sensor included (1M)
- Data is displayed in °F or °C
- Informative Web Interface
- Alarm Max/Min Thresholds
- Continuous Reporting to syslog
- Email & SMS Reporting on threshold breach
- RoHS Compliant



Antenna Series



	ANT-1207	ANT-2520
Description	2.4GHz/5GHz Indoor Omni-Directional Antenna	2.4GHz/5GHz Indoor Directional Patch Antenna
Environment	Indoor	Indoor
Frequency Range	2400~2500 MHz 5150~5850 MHz	2400~2500 MHz 5150~5875 MHz
Peak Gain @ 2.4GHz	5 dBi	7.5 dBi
@ 5GHz	7 dBi	10 dBi
VSWR @ 2.4GHz	< 2.0	≤2.0
@ 5GHz	< 3.0	
Polarization	Linear	Vertical, Linear
HPBW/Horizontal @ 2.4GHz	360°	70°
@ 5GHz		60°
HPBW/Vertical @ 2.4GHz	80°	60°
@ 5GHz		30°
Power Handling	5W	2W
Impedance	50 Ω	50 Ω
Connector	PR SMA Plug	PR SMA Plug

Feature Matrix

Broadband Router

		Vigor2133 series				Vigor2915 series		Vigor2926 series	
		2133	2133n	2133ac	2133Vac	2915	2915ac	2926	2926n
WAN	Fixed WAN Port	1 x GbE				1 x GbE		1 x GbE	
	WAN/LAN Switchable Port					1 x GbE		1 x GbE	
LAN	Fixed LAN Port	4 x GbE				3 x GbE		4 x GbE	
	LAN Subnet	4				4		8	
	DMZ Port							1	
USB Port		2				1		2	
NAT Sessions		30,000				50,000		50,000	
WLAN	Standard		11b/g/n	11a/b/g/n/ac			11a/b/g n/ac		11b/g/n
	2.4GHz		●	●			●		●
	5GHz			●			●		
	MIMO		2 x 2	2 x 2			2 x 2		2 x 2
	Antennas (Detachable)		2	2			2		2
VPN	Concurrent VPN Tunnels	2				16		50	
	Max. Concurrent SSL VPN	2				8		25	
Routing	Static Route	●				●		●	
	Policy Route	●				●		●	
	RIP	●				●		●	
	BGP							●	
	OSPF								
CSM	APP Enforcement	●				●		●	
	URL & Keywords Filter	●				●		●	
	Web Content Filter	●				●		●	
	DNS Filter	●				●		●	
VoIP	FXS Port				2				
	FXO Port								

Vigor2926 series		Vigor2952 series		Vigor2960	Vigor300B	Vigor3220 series		Vigor3900	Vigor3910 series
2926ac	2926Vac	2952/P	2952n/Pn	2960	300B	3220	3220n	3900	3910
1 x GbE		1 x GbE + 1 x GbE/SFP Combo		2 x GbE	4 x GbE	4 x GbE		4 x GbE + 1 x SFP	
1 x GbE									2 x 2.5GbE + 4 x GbE + 2 x SFP+
4 x GbE		4 x GbE		4 x GbE	2 x GbE	1 x GbE		2 x GbE + 1 x SFP	4 x GbE
8		8		20	4	8		50	50
1		1			2	1		1	
2		2		2	2	2		2	2
50,000		60,000		80,000	100,000	100,000		120,000	150,000
11a/b/g/n/ ac wave 2			11b/g/n				11b/g/n		
•			•				•		
•									
4 x 4			2 x 2				2 x 2		
4			2				2		
50		200		200		200		500	500
25		50		50		50		100	200
•		•		•	•	•		•	•
•		•		•	•	•		•	•
•		•		•	•	•		•	•
•		•		•	•	•		•	•
				•	•			•	•
•		•		•	•	•		•	•
•		•		•	•	•		•	•
•		•		•	•	•		•	•
•		•		•	•	•		•	•
	2								
	1								

xDSL Router

		Vigor130	Vigor160 series		Vigor2762 series				Vigor2765 series	
		130	165	166	2762	2762n	2762ac	2762Vac	2765	2765ac
WAN	Fixed WAN Port	1 x A/VDSL	1 x A/VDSL /35b	1 x A/VDSL /35b/G.Fast	1 x A/VDSL				1 x A/VDSL/35b	
	WAN/LAN Switchable Port				1 x GbE				1 x GbE	
LAN	Fixed LAN Port	1 x GbE	2 x GbE		3 x GbE				3 x GbE	
	LAN Subnet	1	1		2				2	
	DMZ Port									
USB Port					2				2	
NAT Sessions		10,000	10,000		50,000				50,000	
WLAN	Standard					11b/g/n	11a/b/g/n/ac			11a/b/g /n/ac
	2.4GHz					●	●			●
	5GHz						●			●
	MIMO					2 x 2	2 x 2			2 x 2
	Antennas (Detachable)					2	2			2
VPN	Concurrent VPN Tunnels				2				2	
	Max. Concurrent SSL VPN				2				2	
Routing	Static Route	●	●		●				●	
	Policy Route				●				●	
	RIP	●	●		●				●	
	BGP									
	OSPF									
CSM	APP Enforcement				●				●	
	URL & Keywords Filter	●	●		●				●	
	Web Content Filter				●				●	
	DNS Filter				●				●	
VoIP	FXS Port							2		
	FXO Port									

Vigor2766 series		Vigor2862 series				Vigor2865 series		Vigor2866 series		Vigor3910 series
2766	2766ac	2862/B	2862n/Bn	2862ac	2862Vac	2865	2865ac	2866	2866ac	3910dsl
1 x A/VDSL/35b/G.Fast		1 x A/VDSL				1 x A/VDSL/35b		1 x A/VDSL/35b/G.Fast		1 x A/VDSL/35b /G.Fast
1 x GbE		1 x GbE				1 x GbE		1 x GbE		2 x 2.5GbE + 4 x GbE + 2 x SFP+
3 x GbE		4 x GbE				5 x GbE		5 x GbE		4 x GbE
2		8				8		8		50
		1				1		1		
2		2				2		2		2
50,000		50,000				50,000		50,000		150,000
	11a/b/g /n/ac		11b/g/n	11a/b/g/n/ ac wave 2			11a/b/g/n/ ac wave 2		11a/b/g/n/ ac wave 2	
	●		●	●			●		●	
	●			●			●		●	
	2 x 2		2 x 2	4 x 4			4 x 4		4 x 4	
	2		2	4			4		4	
2		32				32		32		500
2		16				16		16		200
●		●				●		●		●
●		●				●		●		●
●		●				●		●		●
		●				●		●		●
										●
●		●				●		●		●
●		●				●		●		●
●		●				●		●		●
●		●				●		●		●
					2					
					1					

LTE & Fiber Router

		VigorLTE 200 series		Vigor2620 LTE series		Vigor2862 LTE series		
		200	200n	2620L	2620Ln	2862L	2862Ln	2862Lac
WAN	Fixed WAN Port	2 x LTE		1 x A/VDSL + 2 x LTE		1 x A/VDSL + 1 x LTE		
	WAN/LAN Switchable Port	1 x GbE		1 x GbE		1 x GbE		
LAN	Fixed LAN Port	1 x GbE		1 x GbE		4 x GbE		
	LAN Subnet	2		2		8		
	DMZ Port					1		
USB Port						1		
NAT Sessions		30,000		30,000		50,000		
WLAN	Standard		11b/g/n		11b/g/n		11b/g/n	11a/b/g/n/ac wave 2
	2.4GHz		•		•		•	•
	5GHz							•
	MIMO		2 x 2		2 x 2		2 x 2	4 x 4
	Antennas (Detachable)		2 (Hidden)		2 (Hidden)		2	4
VPN	Concurrent VPN Tunnels	2		2		32		
	Max. Concurrent SSL VPN	2		2		16		
Routing	Static Route	•		•		•		
	Policy Route					•		
	RIP	•		•		•		
	BGP					•		
	OSPF							
CSM	APP Enforcement	•		•		•		
	URL & Keywords Filter	•		•		•		
	Web Content Filter	•		•		•		
	DNS Filter					•		
VoIP	FXS Port							
	FXO Port							

Vigor2865 LTE series		Vigor2866 LTE series		Vigor2926 LTE series		
2865L	2865Lac	2866L	2866Lac	2926L	2926Ln	2926Lac
1 x A/VDSL/35b + 1 x LTE		1 x A/VDSL/35b/G.Fast + 1 x LTE		1 x GbE + 1 x LTE		
1 x GbE		1 x GbE		1 x GbE		
5 x GbE		5 x GbE		4 x GbE		
8		8		8		
1		1		1		
1		1		1		
50,000		50,000		50,000		
	11a/b/g/n/ ac wave 2		11a/b/g/n/ ac wave 2		11b/g/n	11a/b/g/n/ ac wave 2
	•		•		•	•
	•		•			•
	4 x 4		4 x 4		2 x 2	4 x 4
	4		4		2	4
32		32		50		
16		16		25		
•		•		•		
•		•		•		
•		•		•		
•		•		•		
•		•		•		
•		•		•		
•		•		•		
•		•		•		

Fiber
2133FVac
1 x SFP
4 x GbE
4
2
30,000
11a/b/g/n/ac
•
•
2 x 2
2
2
•
•
•
•
•
•
•
2

Switch

		Smart Lite		Web Smart		L2 Managed		
		VigorSwitch G1080	VigorSwitch P1092	VigorSwitch G1280	VigorSwitch P1280	VigorSwitch P2121	VigorSwitch G2280	VigorSwitch P2280
Ports	Ethernet	8 x GbE	8 x GbE	24 x GbE	24 x GbE	8 x GbE	24 x GbE	24 x GbE
	SFP		2					
	SFP/GbE Combo			4	4	4	4	4
	Console					•	•	•
PoE	Ports		8		24	8		24
	Power Budget		110		340	140		385
VLAN	Tag Based	•	•	•	•	•	•	•
	Port Isolation	•	•	•	•	•	•	•
	Voice VLAN			•	•	•	•	•
	MAC-Based					•	•	•
	GVRP					•	•	•
Security	ACL			•	•	•	•	•
	Storm Control	•	•	•	•	•	•	•
	IPSG			•	•	•	•	•
	802.1x					•	•	•
	DHCP Snooping					•	•	•
	Loop Protection	•	•	•	•	•	•	•
Spanning Tree	STP			•	•	•	•	•
	RSTP			•	•	•	•	•
	MSTP					•	•	•
Multicast	IGMP Snooping	•	•	•	•	•	•	•
	MLD Snooping					•	•	•
Link Aggregation Group		1	2	8	8	8	8	8
SNMP				v1/v2c/v3		v1/v2c/v3		
Switch Management		•	•	•	•	•	•	•

Access Point

		VigorAP 710	VigorAP 810	VigorAP 802	VigorAP 903	VigorAP 910C	VigorAP 1000C	VigorAP 920R series	
		710	810	802	903	910C	1000C	920R	920RPD
Band	2.4GHz	•	•	•	•	•	•	•	•
	5GHz			•	•	•	Dual	•	•
WLAN	Wi-Fi Standard	11b/g/n	11b/g/n	11a/b/g/n/ac	11a/b/g/n/ac wave 2	11a/b/g/n/ac	11a/b/g/n/ac wave 2	11a/b/g/n/ac wave 2	11a/b/g/n/ac wave 2
	Antenna	2 x 2	2 x 2	2 x 2	2 x 2	2 x 2	2 x 2	2 x 2	2 x 2
		Detachable	Detachable	Internal	Detachable	Internal	Internal	Detachable	Detachable + Internal
	AirTime Fairness	•	•	•	•	•	•	•	•
	Roaming	•	•	•	•	•	•	•	•
LAN	Ethernet	1 x FE	5 x FE	1 x GbE	5 x GbE	1 x GbE	2 x GbE	1 x GbE	2 x GbE
	PoE-PD		•		•	•	•	•	•
	PoE-PSE								•
Mode	AP	•	•	•	•	•	•	•	•
	Universal Repeater	•	•	•	•	•	•	•	•
	Mesh			Node	•		•	•	•
Mounting (Desk/Wall/Ceiling/Pole)		D/W	D/W	Plug	D/W	C/W	C/W	W/P	W/P
Environment		Indoor	Indoor	Indoor	Indoor	Indoor	Indoor	Outdoor	Outdoor
USB Port			1		1				
Max. Data Rate		300 Mbps	300 Mbps	300 + 867 Mbps	400 + 867 Mbps	300 + 867 Mbps	400+867+867 Mbps	400 + 867 Mbps	400 + 867 Mbps
Built-in RADIUS		•	•	Client	•	•	•	•	•
Central Management		•	•	•	•	•	•	•	•
Stand-alone Operation		•	•	•	•	•	•	•	•

DrayTek

www.draytek.com

Tel: +886-3-5972727 Fax: +886-3-5972121 E-mail: info@draytek.com

Trademarks and brand names are the properties of their respective owners.
The scope of delivery and other details are subject to change without prior notice.

Copyrights © DrayTek Corp. All right reserved.

